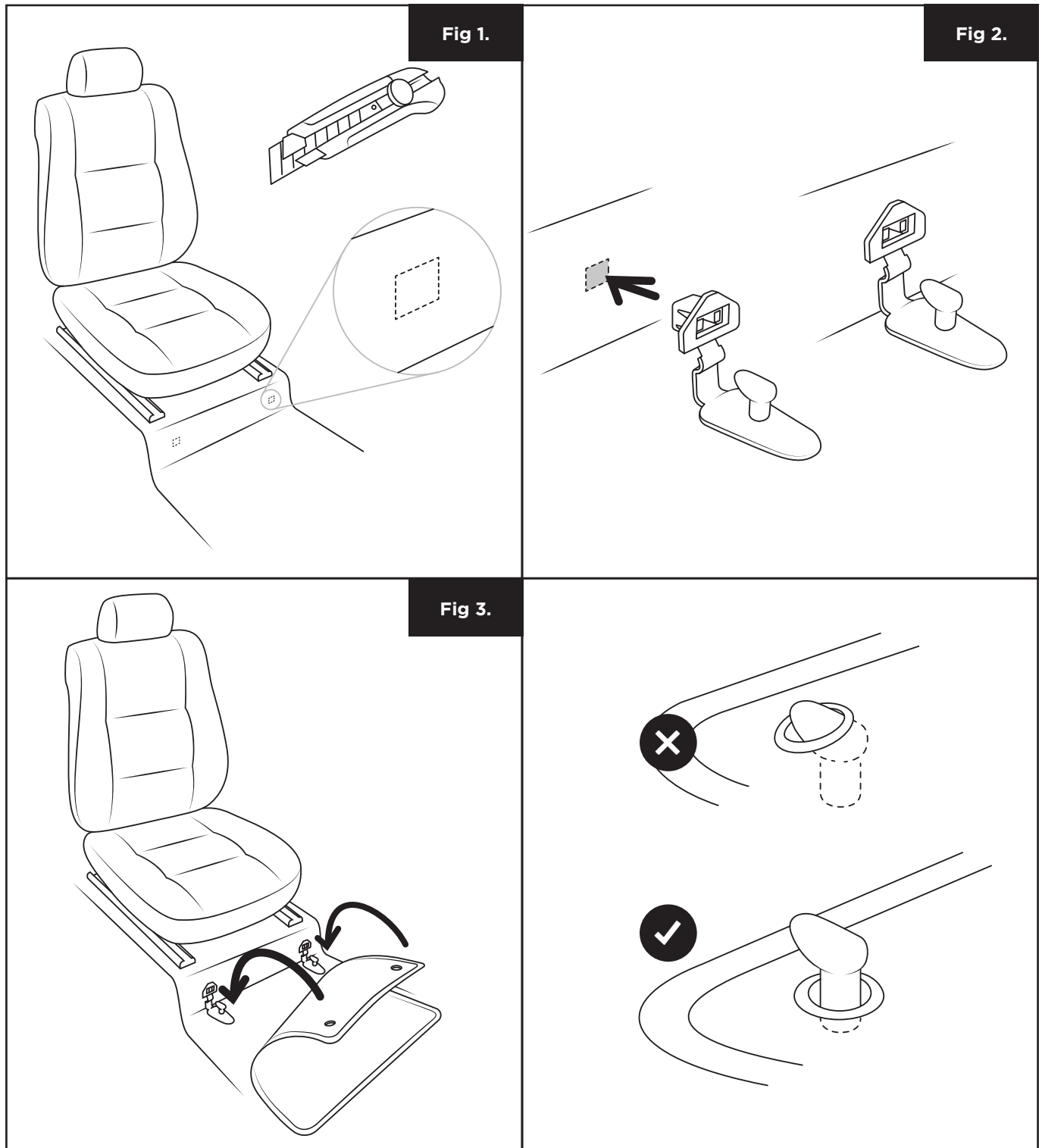


Clip Installation Manual



Step 1: Find slits on carpet of driver's seat as shown in **figure 1**. Next cut the perforated slit and turn up the carpet to expose the installation square holes.

Step 2: Insert clips into the square holes as shown in **figure 2**. Be sure the two clips are secure and locked into the square holes.

Step 3: Place the driver's side floor mat on the floor and hook the mat grommets over the installed fastener as shown in **figure 3**.

