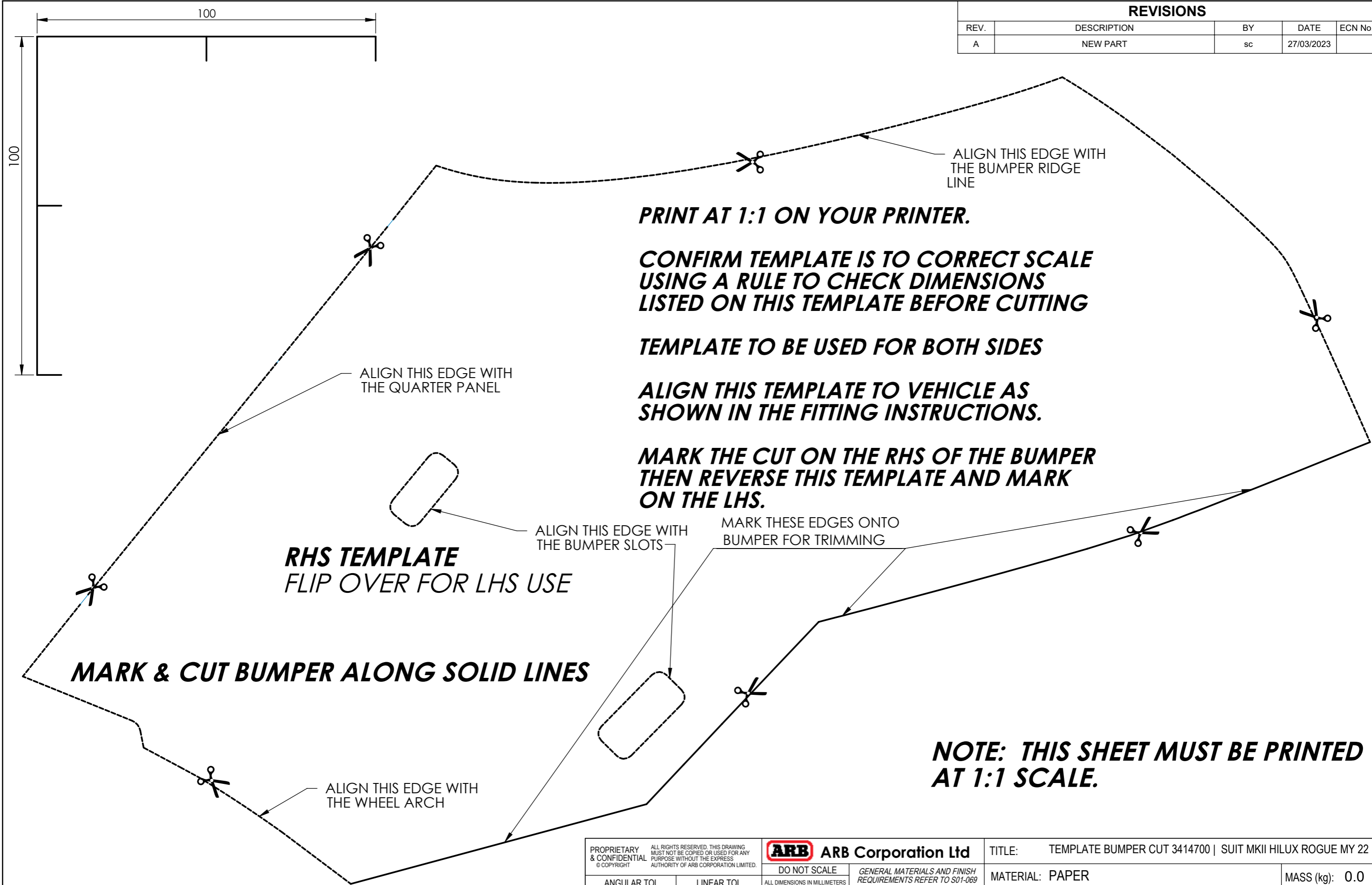


CONTROLLED DRAWING

REVISIONS				
REV.	DESCRIPTION	BY	DATE	ECN No.
A	NEW PART	sc	27/03/2023	



PRINT AT 1:1 ON YOUR PRINTER.

CONFIRM TEMPLATE IS TO CORRECT SCALE USING A RULE TO CHECK DIMENSIONS LISTED ON THIS TEMPLATE BEFORE CUTTING

TEMPLATE TO BE USED FOR BOTH SIDES

ALIGN THIS TEMPLATE TO VEHICLE AS SHOWN IN THE FITTING INSTRUCTIONS.

MARK THE CUT ON THE RHS OF THE BUMPER THEN REVERSE THIS TEMPLATE AND MARK ON THE LHS.

**RHS TEMPLATE
FLIP OVER FOR LHS USE**

MARK & CUT BUMPER ALONG SOLID LINES

NOTE: THIS SHEET MUST BE PRINTED AT 1:1 SCALE.

<small>PROPRIETARY & CONFIDENTIAL © COPYRIGHT</small> <small>ALL RIGHTS RESERVED. THIS DRAWING MUST NOT BE COPIED OR USED FOR ANY PURPOSE WITHOUT THE EXPRESS AUTHORITY OF ARB CORPORATION LIMITED.</small>	ARB Corporation Ltd		TITLE: TEMPLATE BUMPER CUT 3414700 SUIT MKII HILUX ROGUE MY 22		
	DO NOT SCALE <small>ALL DIMENSIONS IN MILLIMETERS</small>		<small>GENERAL MATERIALS AND FINISH REQUIREMENTS REFER TO S01-069</small>		
	ANGULAR TOL. X° ± 1° X.X° ± 0.5°	LINEAR TOL. X ± 1.0 X.X ± 0.5	DETAILED S COSTANZO	DATE 027/03/2023	MATERIAL: PAPER FINISH: NATURAL MASS (kg): 0.0
	REMOVE ALL BURRS, FLASH & SHARP EDGES		THIRD ANGLE PROJECTION SCALE 1:1 SIZE A3	CHECKED J STUBBE	DATE 30/06/2023 PART NO.: 37801263 PAGE 1 OF 1 REV. A