

CONTROLLED DRAWING

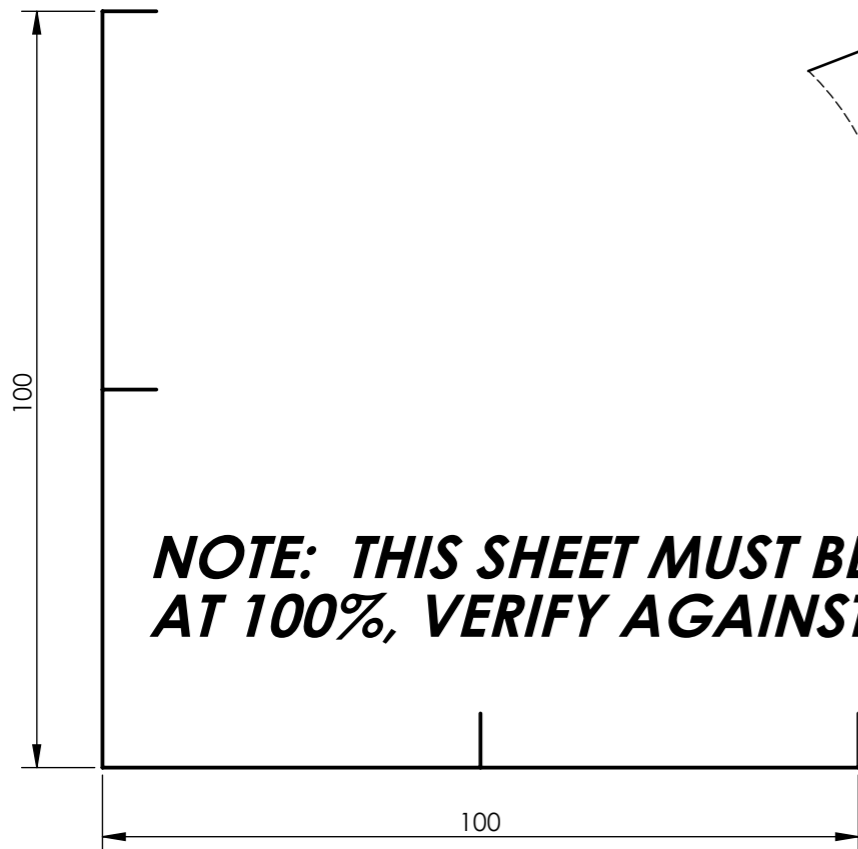
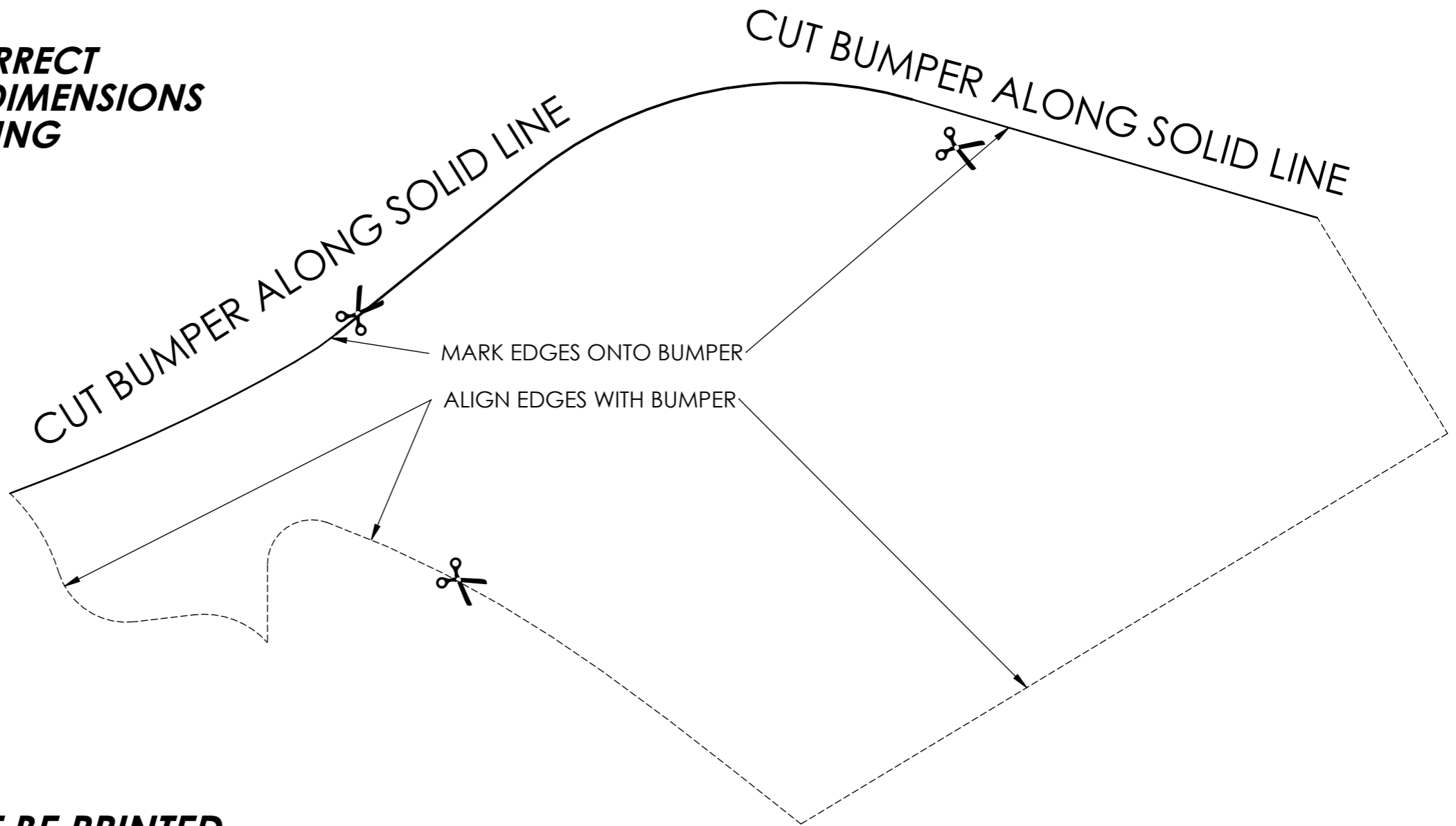
TEMPLATE TO BE USED FOR BOTH SIDES

ALIGN THIS TEMPLATE TO VEHICLE AS SHOWN IN FITTING INSTRUCTIONS.

MARK THE CUT ON THE RHS OF THE BUMPER THEN REVERSE THIS TEMPLATE AND MARK THE LHS.

CONFIRM TEMPLATE IS TO THE CORRECT SCALE USING A RULER TO CHECK DIMENSIONS LISTED ON TEMPLATE BEFORE CUTTING

REVISIONS				
REV.	DESCRIPTION	BY	DATE	ECN No.
A	NEW PART	BM	1/10/2015	--
B	INCREASED CLEARANCE TO WING EDGE	MB	05/02/2016	16/025



NOTE: THIS SHEET MUST BE PRINTED AT 100%, VERIFY AGAINST THIS SCALE

<small>PROPRIETARY & CONFIDENTIAL © COPYRIGHT</small> <small>ALL RIGHTS RESERVED. THIS DRAWING MUST NOT BE COPIED OR USED FOR ANY PURPOSE WITHOUT THE EXPRESS AUTHORITY OF ARB CORPORATION LIMITED.</small>		ARB Corporation Ltd	TITLE: TEMPLATE 2 HILUX BULLBAR 150N	
DO NOT SCALE <small>ALL DIMENSIONS IN MILLIMETERS</small>		<small>GENERAL MATERIALS AND FINISH REQUIREMENTS REFER TO S01-069</small>		MATERIAL: N/A
ANGULAR TOL. X° ± 1° X.X° ± 0.5°	LINEAR TOL. X ± 1.0 X.X ± 0.5	THIRD ANGLE PROJECTION SCALE 1:1 SIZE A3	DETAILED B MURPHY CHECKED J GRUNDY	DATE 01/10/2015 DATE 8/02/2016
REMOVE ALL BURRS, FLASH & SHARP EDGES			FINISH: N/A	MASS (kg): 0.2
			PART NO.: 3789446	PAGE 1 OF 1 REV. B