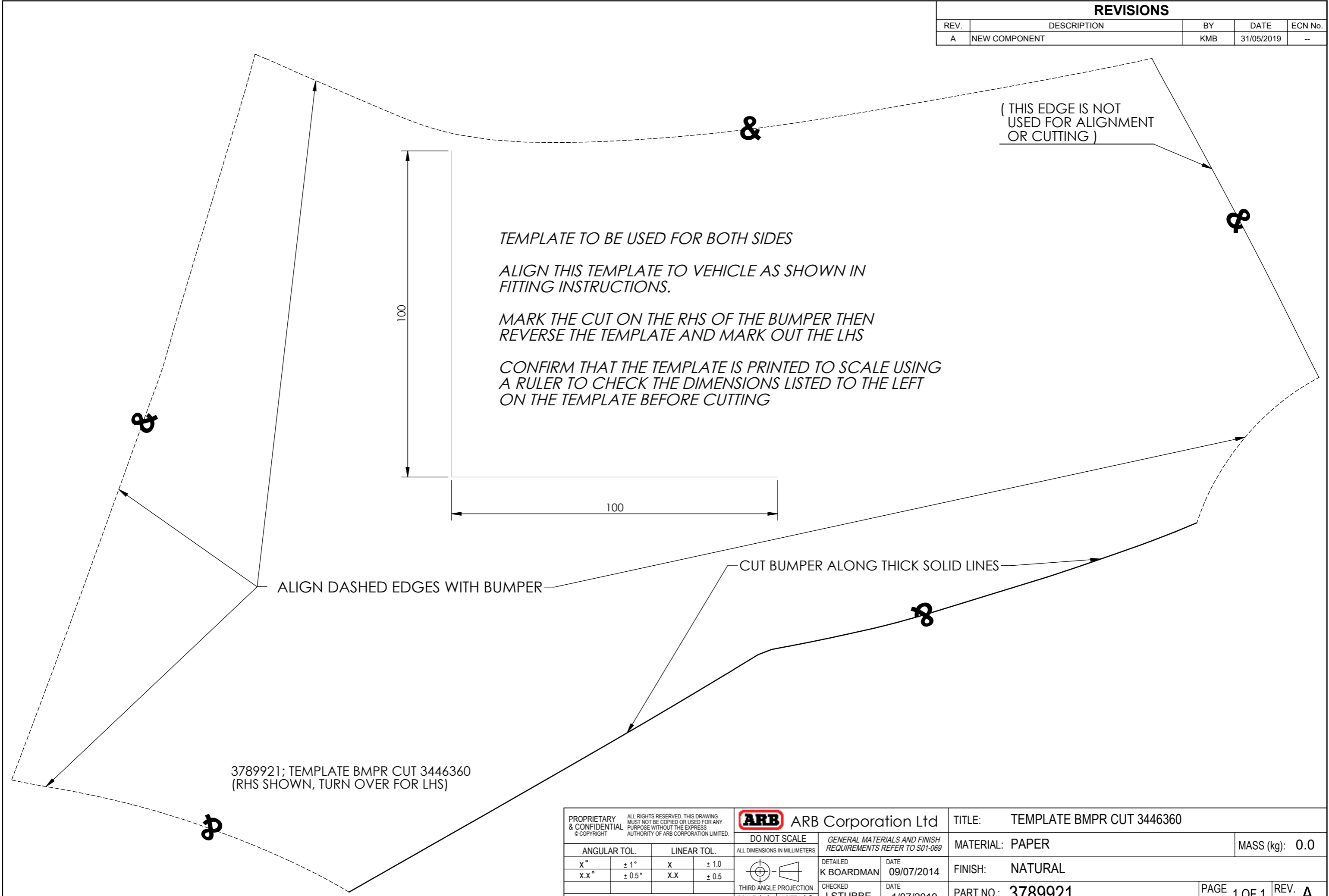


CONTROLLED DRAWING

REVISIONS				
REV.	DESCRIPTION	BY	DATE	ECN No.
A	NEW COMPONENT	KMB	31/05/2019	--



TEMPLATE TO BE USED FOR BOTH SIDES

ALIGN THIS TEMPLATE TO VEHICLE AS SHOWN IN FITTING INSTRUCTIONS.

MARK THE CUT ON THE RHS OF THE BUMPER THEN REVERSE THE TEMPLATE AND MARK OUT THE LHS

CONFIRM THAT THE TEMPLATE IS PRINTED TO SCALE USING A RULER TO CHECK THE DIMENSIONS LISTED TO THE LEFT ON THE TEMPLATE BEFORE CUTTING

(THIS EDGE IS NOT USED FOR ALIGNMENT OR CUTTING)

ALIGN DASHED EDGES WITH BUMPER

CUT BUMPER ALONG THICK SOLID LINES

3789921; TEMPLATE BMPR CUT 3446360
(RHS SHOWN, TURN OVER FOR LHS)

PROPRIETARY & CONFIDENTIAL ALL RIGHTS RESERVED. THIS DRAWING MUST NOT BE COPIED OR USED FOR ANY PURPOSE WITHOUT THE EXPRESS AUTHORITY OF ARB CORPORATION LIMITED.	ARB Corporation Ltd	TITLE: TEMPLATE BMPR CUT 3446360	
ANGULAR TOL. X° ± 1° X.X° ± 0.5°	LINEAR TOL. X ± 1.0 X.X ± 0.5	DO NOT SCALE ALL DIMENSIONS IN MILLIMETERS	GENERAL MATERIALS AND FINISH REQUIREMENTS REFER TO S01-069
THIRD ANGLE PROJECTION SCALE 1:1 SIZE A3		CHECKED J STUBBE	DATE 1/07/2019
REMOVE ALL BURRS, FLASH & SHARP EDGES		DETAILED K BOARDMAN	DATE 09/07/2014
		FINISH: NATURAL	MASS (kg): 0.0
		PART NO.: 3789921	PAGE 1 OF 1 REV. A