

INSTALLATION INSTRUCTIONS



R1570 - TO SUIT HONDA CR-V

PLEASE READ INSTRUCTIONS THROUGH BEFORE YOU BEGIN

WARNING : 1. Do not drill, cut weld or otherwise modify the towbar.

2. If you are using electric welding on a motor vehicle, always check that the vehicle is not equipped with electronic engine or instrument management equipment. Failure to do so could destroy any onboard computers. If in doubt, check with the vehicle's manufacturer.

Max. Tow Weight: 1200kg

1. Ensure all hardware items have been included.
2. Fold rear seats forward.
3. Fold rear carpet forward.
4. Remove three storage compartment lids, 1 large, 2 small.
5. Remove large storage base (4 ring pulls).
6. Remove 2 luggage compartment tie down point (1 each side).
7. Remove 3 plastic buttons each side holding 2 small storage bases and fold forward.
8. Remove bumper bar.
- 8a. Remove 3 self tapers at each wheel arch.
- 8b. Remove 2 plastic trim buttons from under vehicle holding bumper to rear panel.
- 8c. Remove 2 6mm bolts at each corner behind tail gate.
- 8d. Remove 5 plastic trim buttons in top middle of bumper behind tail gate.
- 8e. Unplug wiring to lights in bumper and remove.
9. Remove rear muffler (2 rubber hangers, 2 nuts and bolts).
10. Hold towbar up to vehicle to align with holes in bottom of sub frame.
11. Fit bolts, washers and spacer tubes to tapped holes (second from rear of vehicle) semi tight as per drawing.
12. Using 2 rearward most holes of towbar (1 each side) as guides drill 16.5 holes through bottom of sub frame.
13. Fit supplied loose plates 50x3x50 in between towbar and sub frame to align with 16.5 holes drilled, fit bolts, washers and spacer tubes semi tight as per drawing.
14. Using 2 forward most holes (2 each side) as guides mark inside floor of vehicle using long centre punch.
15. Using curved loose plates as guides hold hole central to pop marks and curved floor to mark and remove body deadener.
16. Using rearward pop marks (1 each side) as guides, drill out to 11mm, fit bolts curved loose plates from inside of vehicle, with spacer tubes, washers and nuts from under vehicle semi tight.
17. Using forward most pop marks (1 each side) as guides, drill out to 16.5, fit bolts curved loose plates and spacer tubes. From inside of vehicle and washers, nuts from under vehicle.
18. Fit U bolt through shipping hook and tail of towbar.
19. Tighten all bolts to torque listing below.
20. Refit all components in reverse of steps 2-9.
21. Towbar rating sticker to be conspicuously located on inside rear end of the driver's door. (See diagram on next page)

RECOMMENDED ASSEMBLY TORQUE LISTING

<u>Diameter</u>	<u>Grade 8.8 Bolt</u>
	Nm
M6	9.5
M8	21.7
M10	43.4
M12	77.3
M16	189.8

FOR TOWING PURPOSES ONLY

For towing capacity details please refer to vehicle owner's manual or to the manufacturer. Overloading can void your warranties

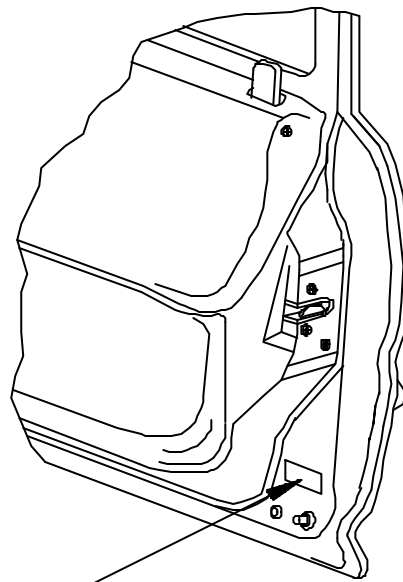
R1570 - TO SUIT HONDA CR-V

NOTE: Hayman Reese recommends that you check your towball to ensure it complies to

Australian Design Rules.

When using Trailer Ballmount part no. 21196 a maximum ball weight of 50kg applies. Hayman Reese recommends the use of a Weight Distributing Hitch according to the following table:

Ball Weight is up to 82kg	use Mini WDH	part no. 4180
Ball Weight is between – 82kg to 150kg	use 350 WDH	part no. 63501
Ball Weight is between – 150kg to 250kg	use 550 WDH	part no. 74504
Ball Weight is between – 250kg to 340kg	use 750 WDH	part no. 76504
Ball Weight is between – 340kg to 455kg	use 1000 WDH	part no. 69004



POSITION OF TOWBAR
RATING STICKER

PLEASE NOTE: You must remove the lug unless you are actually towing if it obscures your number plate. Failure to do so may result in a fine.

22.09.2000

R1570 - TO SUIT HONDA CR-V

