

INSTALLATION INSTRUCTIONS FOR A
REPLACEMENT TANK



LONGRANGER

MADE IN AUSTRALIA SINCE 1976

The Big Tank for a Big Country!

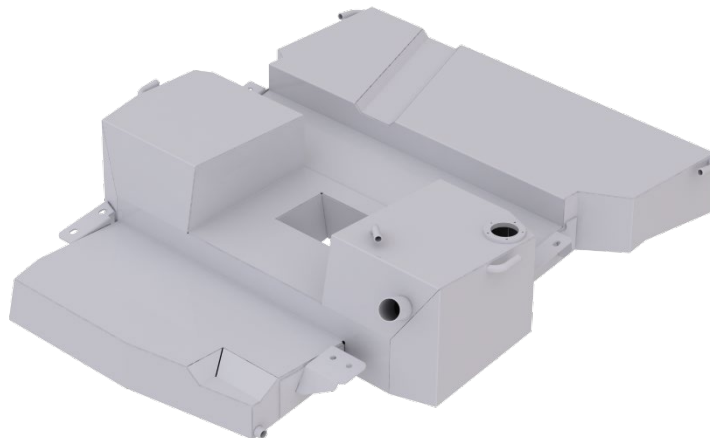


FORD Ranger SUPERDUTY 2025 – Current

TA100– AUXILIARY 65-Litre Tank

GENERAL NOTES

- a) Take a few minutes to read through this installation guide before proceeding.
- b) Fitting time is approximately 3 hours. No major vehicle modifications are required.
- c) This LONGRANGER tank locates under the rear of the vehicle, above the spare wheel.
- d) **LONGRANGER** tanks are coated with a high-performance primer. For added protection, a topcoat may be added. If the vehicle has been rust proofed, it is suggested that the tank (and any changes made to the vehicle during fitting) be touched up after installation.
- e) This setup is designed as an automatic gravity drain into the main fuel tank, effectively acting as ONE large fuel tank.
- f)



INSTALLATION KIT TA100

QTY **DESCRIPTION** This **LONGRANGER** installation kit has been checked by _____

- 1 **LONGRANGER TANK #TA100**
- 1 Double M10 Tag Nut Plate **#TA99B1**
- 1 Fabricated Filler Neck T-Piece **#TA99FN1**
- 3 M10 U-Bolt **#FAUBOLTA99**
- 1 Tag Bolt M12 x 30mm **#SF31**
- 1 Toyota Sender Ring Blanking Plate **#TOYBLPL**
- 1 Toyota Sender Ring Gasket **#TOYOTASRG**
- 1 Hydraulic Fitting 7/16" JIC (F) x 1/4" Straight (Pushlock Fitting) **#BRASSHYJIC71614FEMST**
- 1 Hydraulic Fitting 7/16" JIC x 7/16" JIC (Bulkhead Fitting) **#BRASSHYJIC716716BLKHD**
- 1 Brass Fitting 1/4" BSP x 1/4" 90 Degree Elbow **#BFP60404**
- 1 Brass Plug 1/4" BSP **#HP8**
- 2 12 x 24 x 2mm Fibre Washer **#FAM12 FW FIBRE02**
- 5 M4 x 10mm Set Screws ZP (Blanking Plate)
- 2 M10 x 35mm Hex Head Bolt ZP
- 8 M10 x 30 x 2.5mm Flat Washer ZP
- 2 M10 Spring Washer ZP
- 6 M10 Nyloc Nut ZP
- 1 M12 x 27.5 x 2.5mm Flat Washer ZP
- 1 M12 Spring Washer ZP
- 1 M12 Plain Nut ZP
- 10 Cable Tie 300mm
- 2 Plastic T-Piece 1/2" x 1/2" **#PLTE12MM**
- 2 MH4 Hose Clamp
- 12 MH6 Hose Clamp
- 5 MH24 Hose Clamps
- 1 Fuel Hose 6mm x 290mm
- 2 Fuel Hose 13mm x 100mm
- 2 Fuel Hose 13mm x 400mm
- 1 Fuel Hose 13mm x 800mm (Link Breather)
- 1 Fuel Hose 13mm x 1900mm (Fast Fill Breather)
- 1 Fuel Hose 38mm x 90mm (Filler Neck Joiner)
- 1 Fuel Hose 38mm x 850mm (Auxiliary tank filler)
- 1 Warranty information sheet and return card
- 1 **LONGRANGER** sticker
- 1 **LONGRANGER** replacement tank fitting guide

INSTALLATION GUIDE

1. Take a few minutes to read through this installation guide before proceeding.
2. Check that all items listed in the Long Ranger kit have been received, and that nothing has been damaged in transit.
3. Although the Long Ranger tank has been cleaned and sealed at the factory, it is recommended that its interior be vacuumed again as an added precaution against blocked filters and/or fuel pump damage.
4. If parts are missing or damaged, if foreign matter is found in the tank, or if any problems arise during installation, contact the factory office without delay for advice phone (02) 4953 3288, or email sales@thelongranger.com.au
Our web page also contains an FAQ , so some of your questions may already be answered.

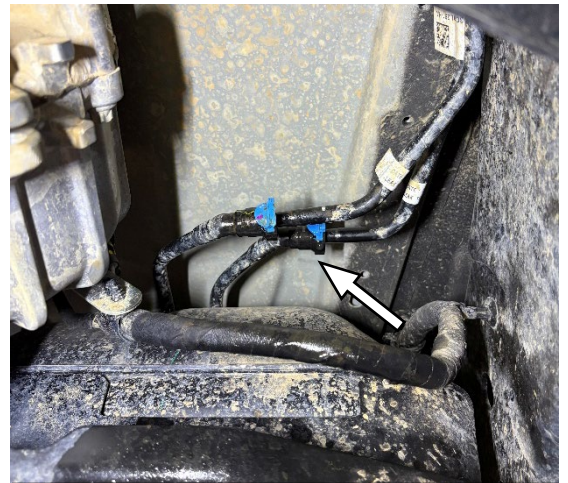


Photo 1: Disconnect OE Fittings

5. The main fuel tank is required to be removed to install the gravity drain bulkhead fitting.
6. Firstly, Remove the Small bash plate located between the front of the fuel tank and transfer case crossmember.
7. **Refer to Photo 1:** Disconnect the both the pickup and return fuel line fittings located at the front of the fuel tank.



Photo 2: Remove OE Fuel Tank

8. **Refer to Photo 2:** Support the OE fuel tank from underneath and remove all OE fuel tank and OE bash guard mounting bolts. NOTE: the fuel tank and bash guard are removed as one unit.
9. Lower the fuel tank roughly 100 – 200mm and remove the small guard from the top of the OE sender unit.
10. **Refer to Photo 3:** Disconnect the electrical harness and OE Fast breather hose from the top of the sender unit.

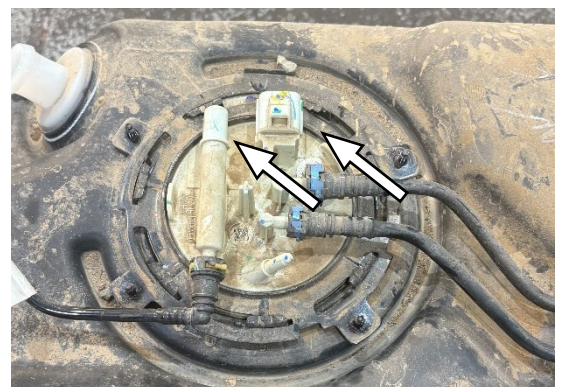


Photo 3: Disconnect OE Fittings

11. Disconnect electrical harness for the control module located on the rear top section of the fuel tank.
12. **Refer to photo 4:** Disconnect the OE filler hose via access through the left rear wheel area.
13. Finish lowering the fuel tank out from under the vehicle. NOTE: take care to ensure no hoses of electrical harness are snagged during removal.
14. Remove the OE fuel tank sender unit and sit aside.
15. **As per photo 5:** mark the location for the bulk head fitting, this is placed in the rear of the fuel tank, aligned 20mm up from the fuel tank mould line and in a central position side to side.
16. Using a 10.5mm drill bit, drill the hole in the marked location for the bulk head fitting.
17. Clean all plastic swarf from around the hole, along with any that may get inside of the fuel tank.
18. **As per Photo 6 and 7:** install the Supplied bulk head fittings with the long shank side and washer located inside the fuel tank, the supplied fibre washer and washer on the outside of the tank. NOTE: Use suitable sealant for the thread (Longranger recommend using Permatex Form-A-Gasket No.2)
19. Refit the OE sender unit the fuel tank.
20. Remove the OE fuel filler hose from the filler neck
21. **As per Photo 8:** Install the Supplied 38 x 90mm Filler Hose to the OE fuel tank.
22. Raise the the OE fuel tank back under the vehicle roughly 100-200mm below final position
23. Reverse to previous steps ensuring to reconnect all fuel lines and electrical harness connections.

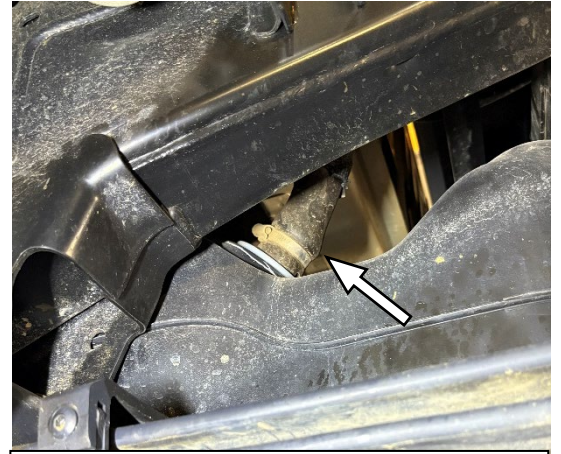


Photo 4: Disconnect OE Filler Hose



Photo 5: Disconnect OE Filler Hose



Photo 6: Bulkhead Fittings



Photo 7: Bulkhead Fittings



Photo 8: Install Filler Hose

24. **As per photo 9:** Install the Brass 1/4" BSP blanking plug into the supplied filler neck section.
25. **As per Photo 10:** Install the Supplied steel filler neck to the OE tank using the Supplied 38 x 90mm filler hose and hose clamps supplied.
26. Raise the fuel tank into the final seating position and refit all mounting hardware.
27. **As per Photo 11:** Cut the OE Filler Hose.
28. As per Photo: install the previous cut section of the OE filler hose ***in the reversed orientation to standard*** to the OE filler neck and side entry point on the steel filler neck
29. **As per Photo 12:** install the supplied 38 x 850mm filler hose to the rear section of the steel filler neck and route along between the chassis rail and adblue tank towards the rear spare wheel area.

Moving onto the auxiliary fuel tank.

30. Remove the Spare Wheel from the vehicle and sit aside. NOTE: Leave spare wheel cable hanging.
31. **As per Photo 13:** place 3x U-Bolts over the chassis crossmembers in preparation for installation.
32. **As per Photo 14:** Remove the rear left-hand side Adblue tank mounting bolt and slide the supplied twin M10 tag nut plate into the cross member.
33. Refit the Adblue tank mounting bolt.
34. **As per Photo 15:** Remove the spare wheel cable from the chassis and refit to the middle cross member using the supplied tag bolt.



Photo 9: Install Brass Plug



Photo 10: Install Steel Filler Neck

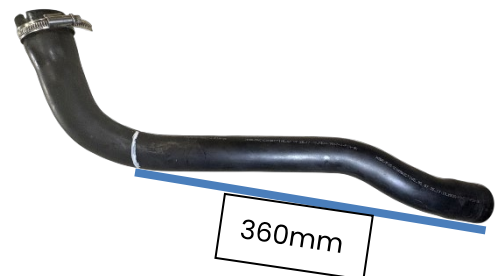


Photo 11: Cut Filler Hose



Photo 12: Connect the filler hose

35. Install the supplied 1/4" BSP x 6mm elbow to the front left corner of the auxiliary tank, with the barb facing forward.
36. Install the Blanking plate to the machined ring located in the top of the tank using the M5 screws and gasket supplied.



Photo 13: Prep Auxiliary tank area

37. **Refer to Plumbing Diagram:** Install the two 12 x 100mm hoses to the front 90-degree breather pipes and the two 12 x 300mm hoses to the rear 90-degree breather pipes.
38. **Refer to Plumbing Diagram:** Install the 2x supplied breather T-pieces with the central barb facing towards each other.
39. Lift the LONGRANGER auxiliary fuel tank into position and pass the spare wheel cable through the centre hole. **NOTE: the fuel tank needs to be significantly angled and passed up over the rear towbar to lift into position.**
40. Loosely fit the two M10 x 30mm bolts and spring washers to the tag nut plate in the front left mount to locate the fuel tank.

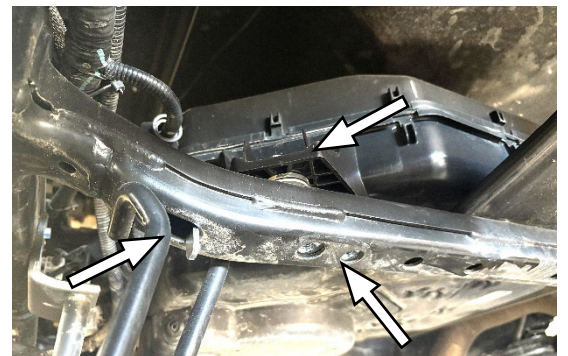


Photo 14: Tag Nut Plate Location

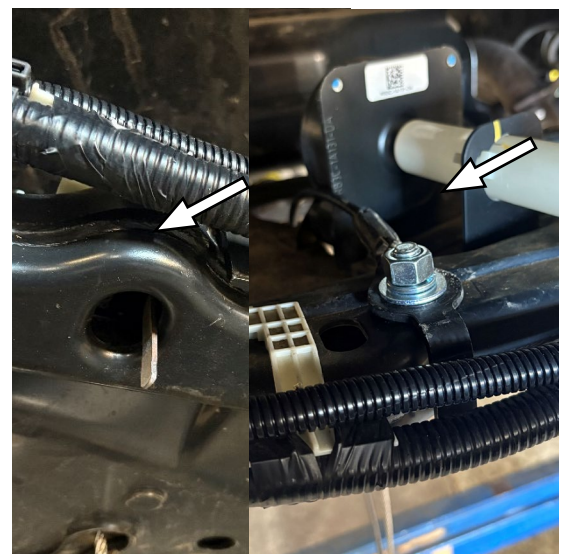


Photo 15: Spare wheel cable relocation

41. Install the three U-bolts to the remain mounting brackets with the M10 nyloc nuts and flat washers supplied.
42. Fasten all mounting hardware to secure the fuel tank into place.
43. **As per Photo 16:** Install the 38mm filler hose and 12mm fast fill breather hose to the front left corner of the LONGRANGER auxiliary tank.
44. Route the 12mm fast fill breather hose along the filler hose and create a shepards hook style bend beside the OE fast fill breather. *NOTE: there is a valve inside the tank to prevent fuel from entering this hose and excaping to atmosphere.*
45. **Refer to Plumbing Diagram:** connect the 12 x 800mm breather hose between the 2x T-pieces to link together.
46. **As per Photo 17:** Install the 6 x 290mm fuel hose to the previously installed 6mm barb outlet located on the front left corner of the fuel tank.
47. **As per Photo 17:** Route this hose over the rear differential and connect to the previously installed bulkhead fitting in the back of the OE fuel tank.

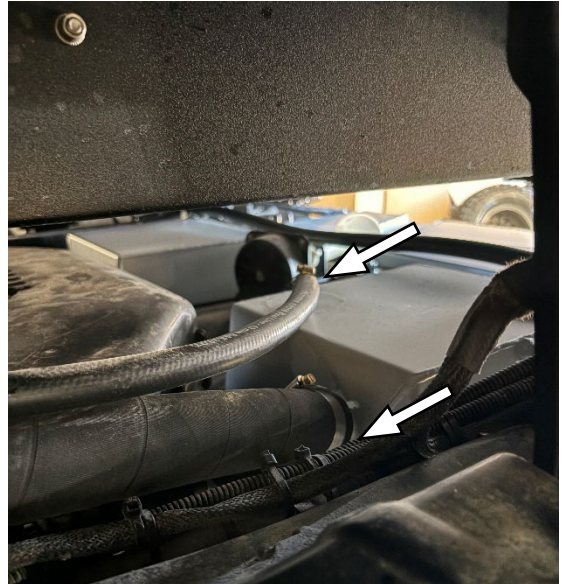
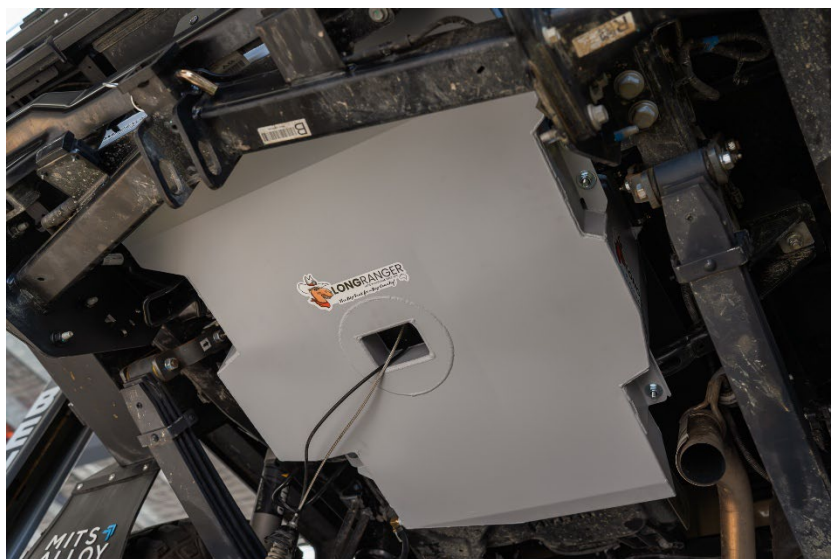
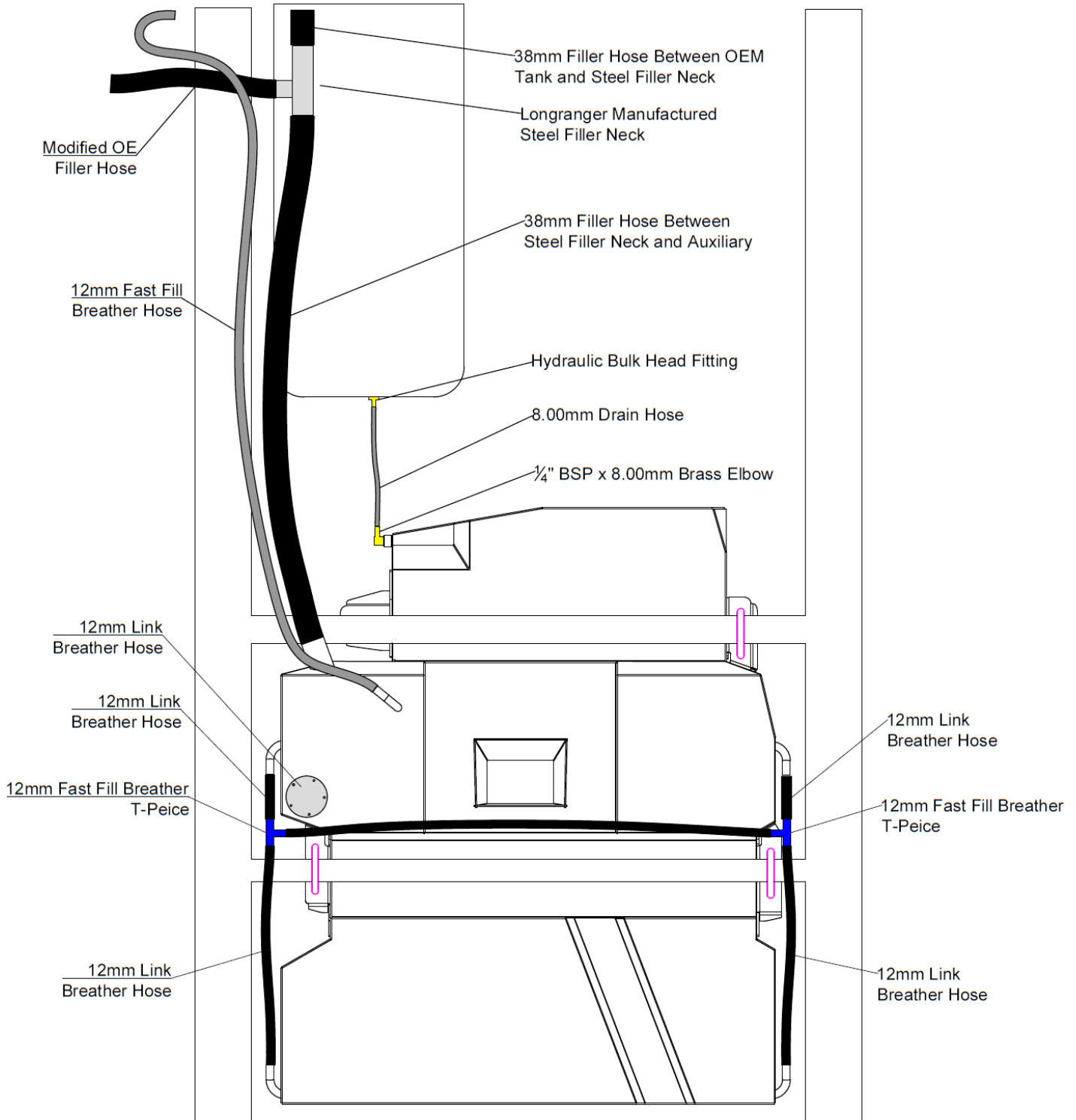


Photo 16: Hose Connections

NOTE: ensure there is a slightly curve in the hose, this provides flexibility for movement between the fuel tanks. *NOTE: We suggest that the tank is filled with a test load of fuel, test drive vehicle and inspect all fittings for leaks (not included in the quoted price).* Visually check the job over, make sure all bolts and clamps are fastened correctly, ensure all fuel hoses and electrical wiring will not chafe on nearby and moving components, detail the area involved in the work before returning the vehicle.



The Long Ranger



PLUMBING DIAGRAM



Explain to the owner the operation of the LONGRANGER TANK.

- a) The LONG RANGER tank will fill in a similar fashion to the OE setup, but the operator has the option of carrying a substantially larger quantity of fuel.
- b) Due to the addition of the LONGRANGER Auxiliary tank the fuel Guage will remain on *FULL* for a longer distance before slowly moving to *EMPTY*.
- c) The **trip computer** with distance (driving range) to empty will no longer accurately show the distance left to travel. The computer still thinks the tank only has the OEM capacity and will not give a larger range reading with the new tank installed. It is suggested that the readings be cautiously interpreted along with the gauge until familiar with the new readings when carrying additional fuel.
- d) The quoted capacity of the LONG RANGER tank was determined by a bench test. The actual operating capacity may vary slightly from vehicle to vehicle.
- e) The LONG RANGER tank is a premium quality accessory that will provide many years of satisfactory service provided that the Care and Maintenance items listed below are taken care of each time the vehicle is serviced.

Hand these instructions, together with the Warranty Registration card and warranty information, to the owner. Neatly apply the LONG RANGER sticker to the rear bumper or window.

CARE AND MAINTENANCE

1. After the first 1,000 kilometers, clean or replace the fuel filter, check that there is no rubbing or chafing of the tank, fuel hoses or associated components.
2. At each of the vehicle manufacturer's recommended services, check all fastenings for the correct tension, that rust preventative has been correctly applied where applicable, release the tank drain plug and confirm that there is no water present, and replace the fuel filter according to manufacturer's recommendations.