



TOYOTA PRADO 150 SERIES NOV 2009 - 2023

TOWING MIRRORS INSTALLATION GUIDE

Thank you for choosing Clearview Accessories®

When it comes to road safety, having full visibility of your vehicle and your caravan, trailer or horse float is paramount. Clearview Towing Mirrors extend your field of vision when towing, changing lanes or reversing, to help see you to your destination safely. From Cape York's Telegraph Track to the Gibb River Road, Clearview Towing Mirrors are purpose-built tough for Australian conditions!

Clearview Accessories began in 2006, as a family-run business owned by entrepreneur, Mike Cowan and his son-in-law, Jay Praag. In the years that followed, Mike and Jay turned their small family business with three full-time employees, into one of Australia's most respected 4WD and Touring Brands.

With a strong passion for the automotive industry, quality design and discipline in professional workmanship, our trust is built within our values of creating high-quality ADR-compliant designs.

From humble beginnings, Clearview Accessories has grown and today manufactures a range of unique, quality products for your next off-road adventure!

Contact us:

Clearview Accessories,

3 Frog Court, Craigieburn VIC 3064

Phone: (03) 8351 9933

Email: info@clearviewaccessories.com.au

Website: clearviewaccessories.com.au

Find us on social media



facebook.com/clearviewaccessories



instagram.com/clearviewaccessories



youtube.com/clearviewaccessories

Due to Clearview's Continuous Improvement Program, information may change without notice. Clearview takes no responsibility for the result of incorrect use of these installation instructions.

Introduction	2
Getting Started	4
Before You Start	5
Fitting Instructions	6-17
Maintaining Your Mirrors	18
FAQS	19
Troubleshooting	20-21
Warranty	22
Our Range	23



Clearview mirrors are direct replacement mirrors that mount securely in the same position as your original mirrors.

What's in the box



- 1 x Left-Hand side Mirror & Base
- 1 x Right-Hand side Mirror & Base
- 1 x Installation guide



*For variants with 360° Camera (Camera Bracket Kit):

- 1 x Left-Hand side Bottom Access Panel with Camera Bracket
- 1 x Right-Hand side Bottom Access Panel with Camera Bracket

If anything is missing, or damaged, please do not install your new mirrors and contact us on 03 8351 9933 or via: info@clearviewaccessories.com.au

Tools Required:

- 1/4" Ratchet Wrench with a 10mm socket or 10mm spanner/wrench
- Philips head screwdriver
- Flat screwdriver
- Non-marring Plastic Trim Removal Tool/s
- 'S' Hook



NB: If your towing mirrors are equipped with 360° Camera, you may also require:

- White chalk pencil
- Micro Phillips precision screwdriver

Whilst our mirrors can be installed by one person, the process is quicker and easier when an additional person is available to hold the mirror into position.



CAUTION



WARNING

- Read through the fitting instructions before installation of Clearview Accessories.
- Always install the accessory following the fitting instructions. Failure to do so may cause damage to the vehicle or the accessory and will void your warranty.
- Ensure all packaging materials are recycled and/or disposed of in accordance with local regulations.
- It is always recommended that this accessory is fitted by a qualified technician.
- Safely store and protect any removed vehicle components.
- Ensure all bare metal surfaces are protected using Automotive Bare Metal Primer and touch-up paint.
- Remove all metal swarf and dust from all vehicle surfaces if the surface is used for accessory installation.
- Your vehicle may be fitted with the Active Park Assist feature. You should only use this feature with your Towing Mirrors in the fully retracted, driving position.



POWER FOLD

WARNING: DO NOT UNFOLD MANUALLY

If your mirror is equipped with Power Fold. In some cases, the mirror head may be loose before installation as the mirror head needs to be electrically folded and unfolded for a minimum of cycles on its first use to synchronize.

Please refrain from folding the mirror MANUALLY as it can reduce the life span of the product.

- **NB:** This mirror is designed to be manually folded upon impact as a safety feature.



COURTESY / PUDDLE LIGHT

Please understand that every car and every model is different and that some vehicles have different wiring options than other vehicles. We do not know the exact wiring configuration of your vehicle.

If you require the use of the courtesy/puddle light function you will require the assistance of an Auto Electrician.

- Clearview Accessories does NOT provide this service unless it's a standard function on the vehicle.

NB: Where there is an electrical modification of the vehicle, a suitably licenced person should undertake the work.

- IF HARD WIRING: **ORANGE WIRE: NEGATIVE (-) | GREY WIRE: POSITIVE (+)**

Step 1

Prepare vehicle

Place transmission into 'PARK' position with handbrake 'ON'.

- Turn ignition 'ON', then lower both front door windows.
- Turn ignition 'OFF'.



Step 2

Remove door top quarter panel trim

Using a non-marring plastic trim removal tool, gently remove the door top quarter panel trim.

Carefully remove the quarter panel, taking care to leave any plugs connected.



Step 3

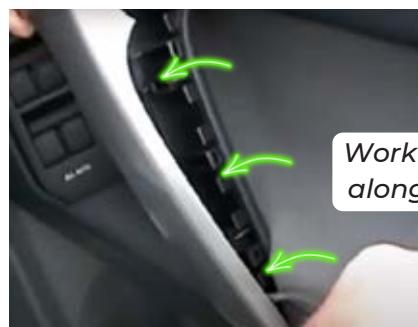
Remove plastic door latch panel

Carefully remove the plastic panel found behind the door latch.



Step 4

Remove door handle cover



Remove the door handle cover by using a non-marring plastic trim tool to free it from the door panel, this will help avoid scratching the cover piece.

Step 5

Remove door trim fixings



Locate and remove the x3 Phillips head screws, one found behind the door latch, and two within the un-covered door handle section.

Step 6

Remove door panel + Courtesy light/Blank panel



Pry back the door panel using a plastic trim removal tool.

- Start from the bottom corner, then work your way along the panel to pry back the rest of the door panel.
- Use an 'S' hook to hang the panel to the door.



NB: Do not pull the door panel away completely from the door, as wiring and door lock mechanisms are secured behind the door.

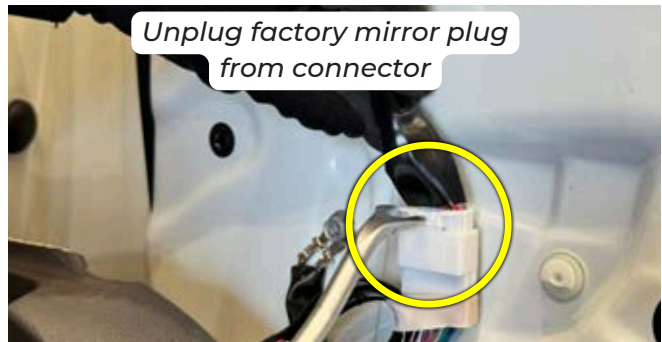


HANDY TIP: If the courtesy light/blank panel pops out of place, do not be alarmed. Simply feed the wire and plug back through and plug back into place.

Step 7

Disconnect factory mirror wiring

Locate and carefully unplug the factory mirror's electrical wiring plug from the connector as demonstrated.



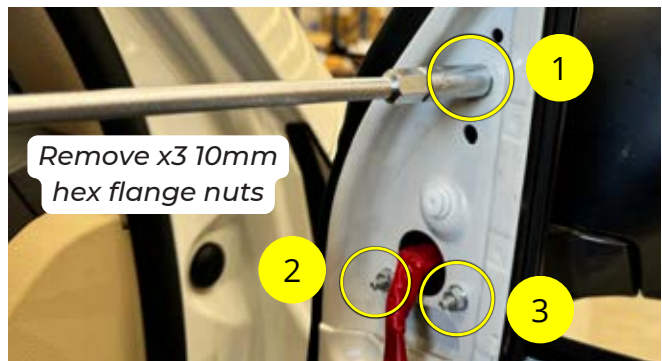
**For demonstration purposes only*

Step 8

Remove the OEM mirrors

Using a 1/4" ratchet wrench with a 10mm socket (or 10mm spanner/wrench), carefully remove the x3 10mm hex flange nuts that support the OEM mirror head in place.

- Start from the bottom to the top and ensure that you're holding the vehicle's factory mirror whilst commencing this step.
- Carefully remove OEM mirror and set aside in preparation for the next steps.



HANDY TIP: Keep your original OEM mirrors as back up should anything unforeseen happen to one of your Clearview Mirrors, necessitating the need to return it to us for repairs.

IMPORTANT

- If the mirrors do not have the 360° camera feature, **SKIP to STEP 10.**
- If the mirrors contains the 360° camera feature, please follow the next steps.

Step 9

Remove OEM 360° Cameras from the OEM mirrors



HANDY TIP: Place the OEM mirrors on a sturdy bench, we recommend placing down some cardboard or non-marking material on the bench to avoid scuffing the mirrors.

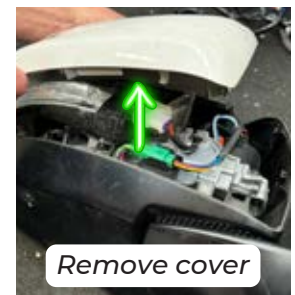
9.1 Locate the lens of your 360° Camera at the bottom of the OEM Mirror.

- With a white pencil, gently create a line from the middle of the camera toward the mirror glass to help with correct camera orientation.



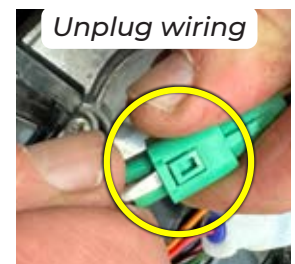
9.2 Using a non-marring plastic trim removal tool, gently remove the mirror's exterior plastic cover.

- Start from the lower corner of the mirror head cover as shown, then gently work your way along the trim/clips etc.
- Separate the exterior mirror cover and set aside.



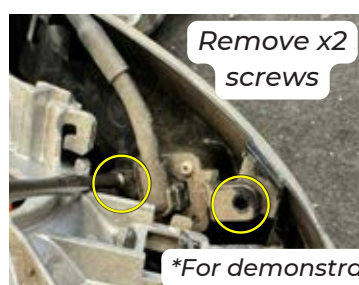
9.3 Gently remove the x3 screws as highlighted.

- Then carefully pry back to separate the mirror head shell only enough to gain access to factory camera bracket located at the bottom of the mirror head.



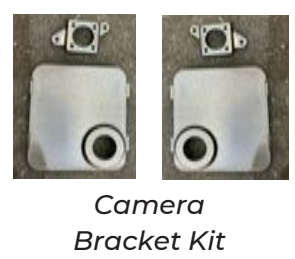
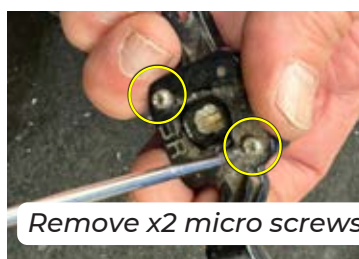
9.4 Disconnect the green wiring plug, this is the wiring for the factory 360° camera.

9.5 Remove the x2 screws securing the factory camera bracket to the mirror head base.



9.6 Gently unplug the wiring connector at the bottom of the factory 360° Camera, this will free up the 360° Camera and camera bracket.

9.7 Carefully remove the x2 micro screws to free up the factory 360° camera from the camera bracket and set aside with the Clearview Camera Bracket Kit.

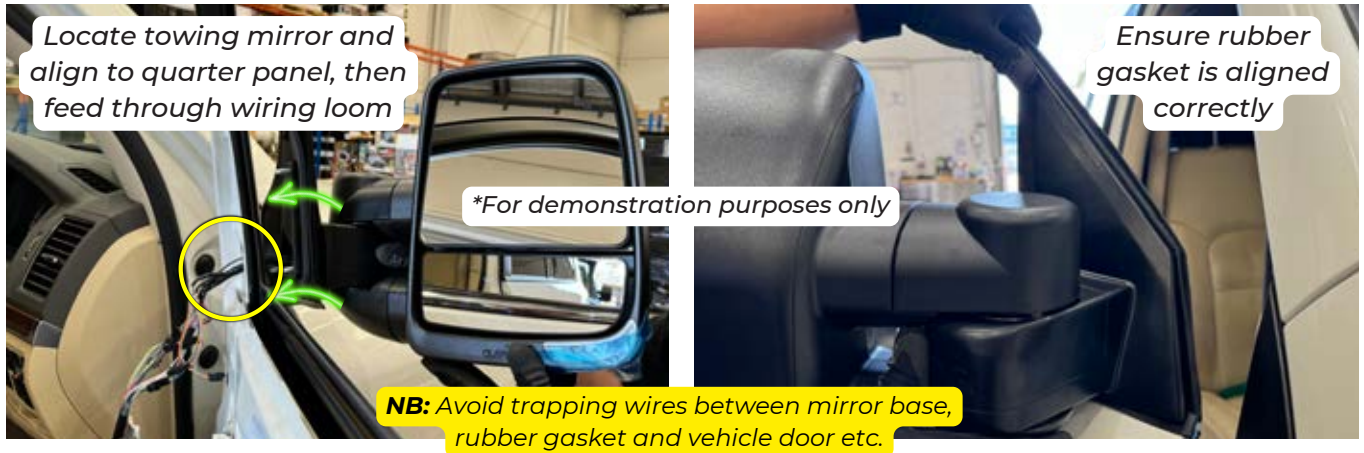


TIP: DO NOT mix up the 360° cameras when removing them from the OEM mirror.

- **LEFT Camera** installed in the LEFT-HAND SIDE (LHS) Clearview Towing Mirror; AND
- **RIGHT Camera** installed in the RIGHT-HAND SIDE (RHS) Clearview Towing Mirror.

Step 10

Attach the Clearview Towing Mirrors to the Vehicle

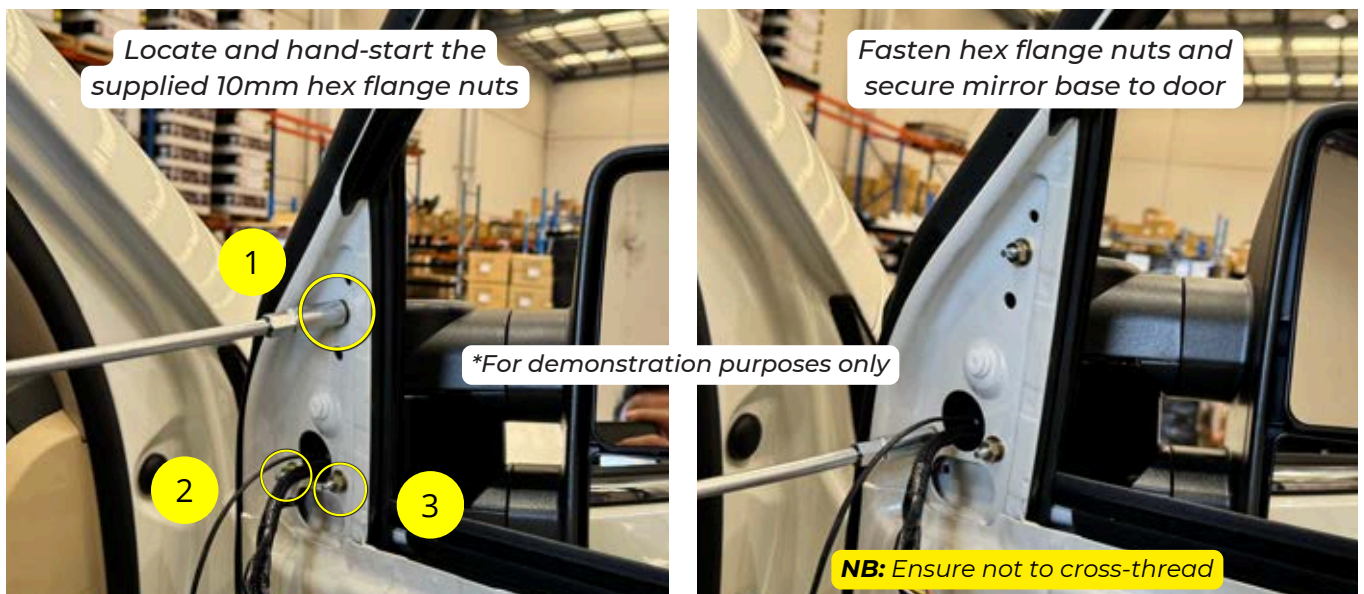


Locate your Clearview Towing Mirrors, and align them to the quarter panel.

- Please make sure you feed any loose cables through the quarter panel hole while aligning.
- Be careful to avoid trapping any wires and ensure that the rubber is aligned correctly.

Step 11

Installing the Clearview Towing Mirrors

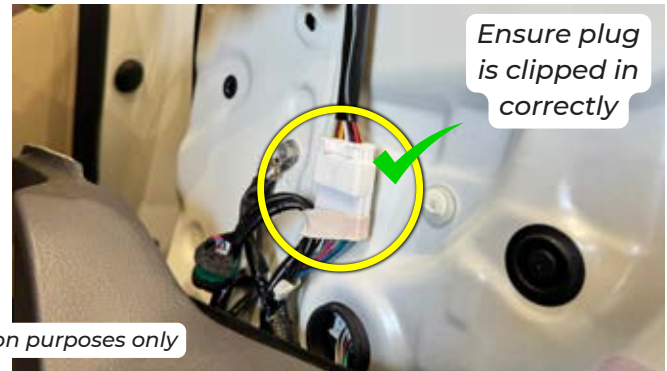


Locate and hand-start the supplied x3 hex flange nuts to ensure the mirror base is seated correctly and to avoid cross-threading.

- Fasten from the top, then work your way to the bottom.
- Tighten to a torque spec of approx. 11Nm-12Nm.

Step 12

Reconnect Factory Mirror Wiring



Once the towing mirror is secure, connect the towing mirror plug to the corresponding factory connector in the door skin as demonstrated.

IMPORTANT

- If the mirrors do not have the 360° camera feature, **SKIP to STEP 17.**
- If the mirrors contains the 360° camera feature, please follow the next steps.

TIP: DO NOT mix up the 360° cameras when removing them from the OEM mirror.

- **LEFT Camera** installed in the LEFT-HAND SIDE (LHS) Clearview Towing Mirror; AND
- **RIGHT Camera** installed in the RIGHT-HAND SIDE (RHS) Clearview Towing Mirror.

Step 13

Fitment of 360° Camera & Lower Access Panel

Prepare mirror head for fitment of camera & lower access panel

13.1 Opening in mirror housing should be clear for fitment of camera lower access panel and to give access to camera wiring plug.

13.2 Remove parts from the camera bracket kit.

- Within the shipping box with the mirror head, you will find a camera bracket kit for your make of vehicle.

Camera bracket kit contains:

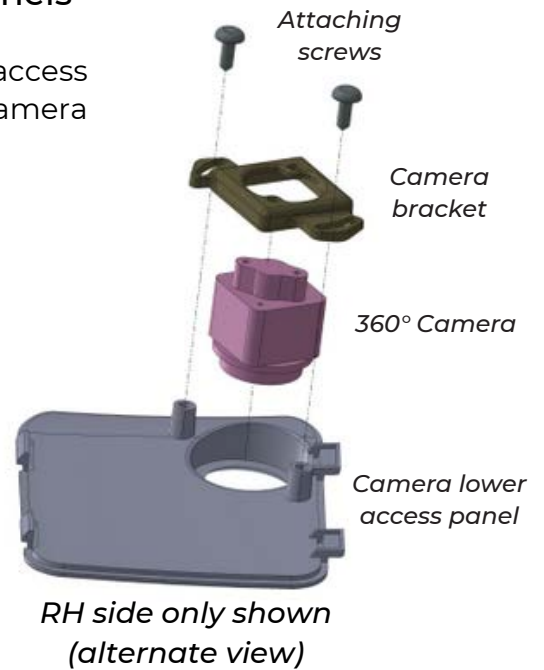
- 1 x LEFT-HAND and 1 x RIGHT-HAND 360° cameras lower access panels.
 - Parts marked/inscribed 'LH' or 'RH'.
- 1 x LEFT-HAND and 1 x RIGHT-HAND 360° camera brackets.
 - Parts marked/inscribed 'LH' or 'RH'.
- 4 x Camera Bracket attaching screws



Assemble OEM cameras to new lower access panels

13.3 Assemble OEM 360° cameras to the camera lower access panels. Align the 360° camera in position using the camera brackets and screws provided in the kit.

- Do not securely tighten the screws yet.

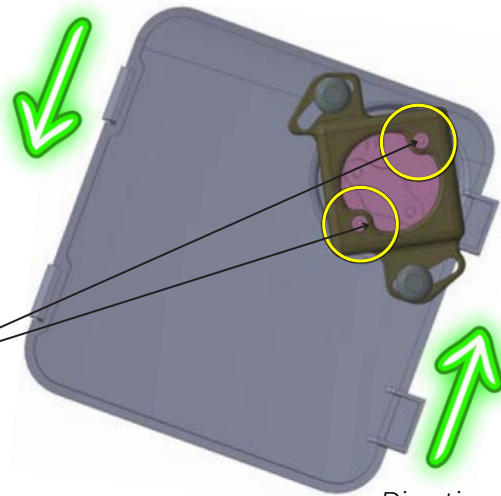


13.4 Align OEM 360° cameras so that the camera bracket wings are positioned over the mounting lugs and locating pins, as shown.

13.5 Secure the OEM 360° cameras to the new camera bracket supplied by using the locating pins and small micro screws previously removed from the original vehicle camera brackets as highlighted.

- Ensure the 'White mark' on the 360° cameras in **Step 9.1** is toward the mirror glass.

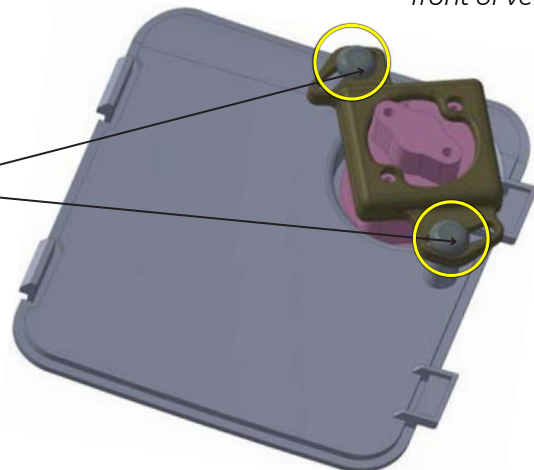
Direction towards mirror glass



Direction towards front of vehicle

13.6 Position the camera brackets, as shown, with the attaching screws located approximately in the mid-point of the slots.

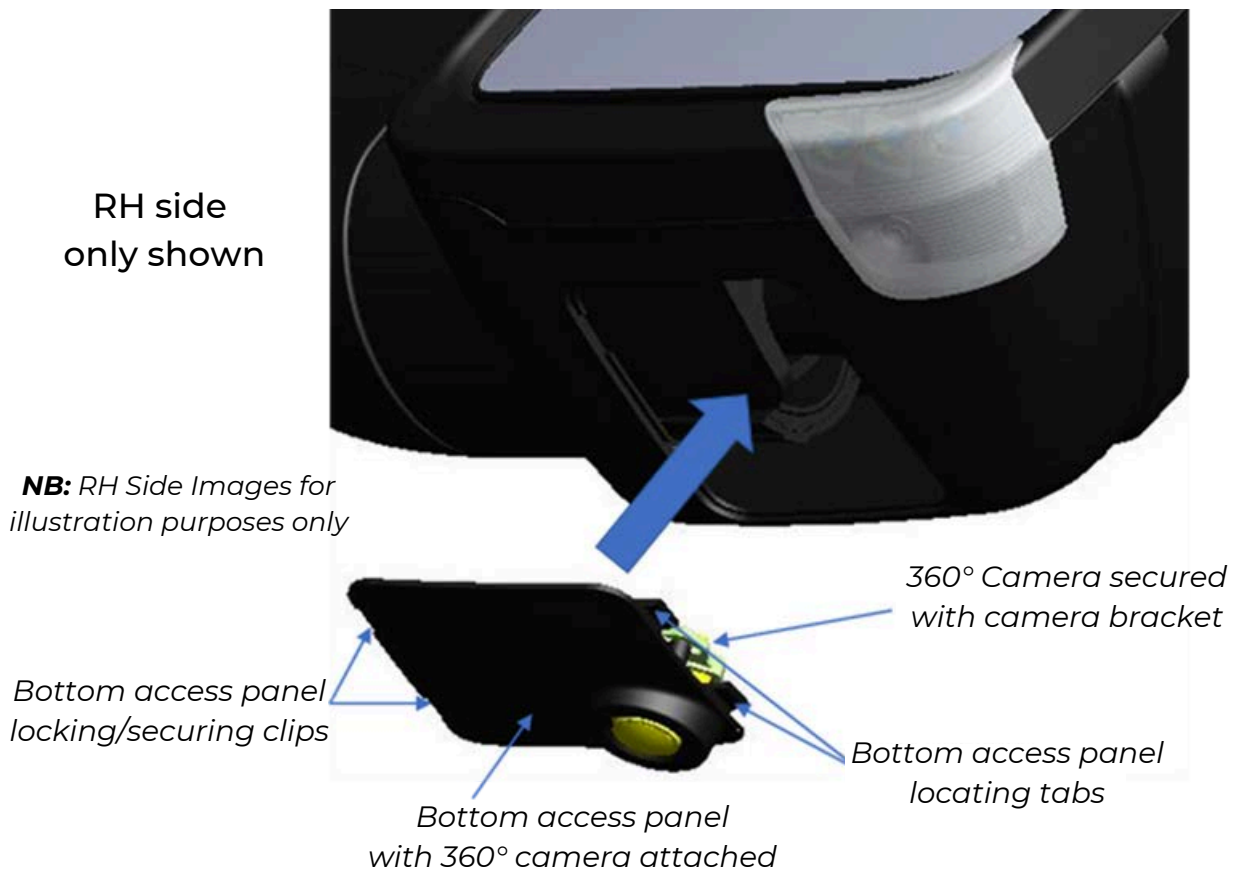
- The attaching screws can now be fastened, however, may need further adjusting in the subsequent steps.



NB: RH Side Images for illustration purposes only

Step 14

Fitment of 360° Camera & Bottom Access Panel



With 'OEM' camera secured to the bottom access panel – begin with right-hand side mirror head.

- 14.1** Locate the camera wiring plug immediately inside the mirror head.
- 14.2** Connect this wiring plug to the mating plug on the camera wiring lead.
- 14.3** Ensure the 2 mating plugs are completely connected.
- 14.4** As you position the lower access panel to the mirror head, allow the wiring to fit into the mirror head opening.
- 14.5** Ensure that the wiring is not trapped or interfering with the fitment of the bottom access panel.
- 14.6** Position the bottom access panel 2 locating tabs into the slots in the mirror head opening. These slots are on the outside of the mirror head.
- 14.7** Now pivot the inner side of the bottom access panel up until the locking clips are in contact with the mirror head opening.
- 14.8** Apply localised pressure to this edge of the bottom access panel until the locking clips snap into position.
- 14.9** The bottom access panel and camera assembly are now in position.
- 14.10** REPEAT the above steps for the LEFT-HAND Side.
- 14.11** You are now ready to test the alignment of both cameras.

Step 15

Check and adjust camera alignment on vehicle

15.1 Preparation for testing

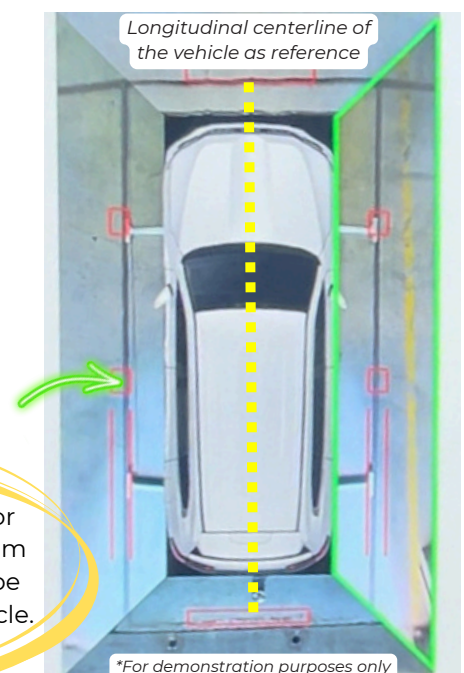
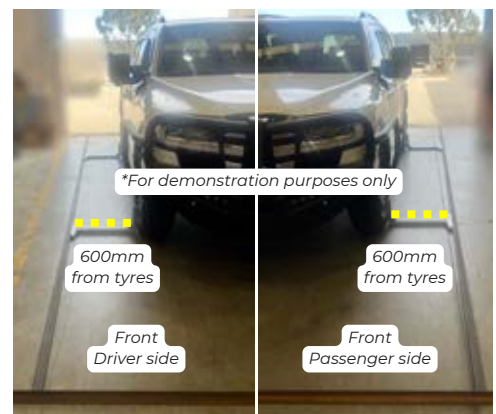
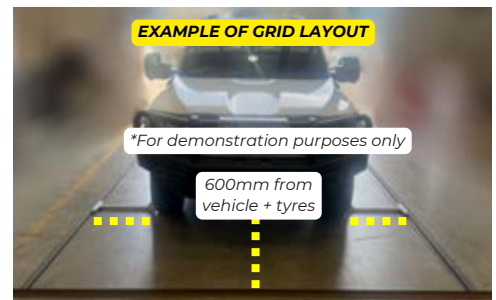
- Position the vehicle on a flat clear surface, and ensure no obstructions when testing.
- Ensure a minimum space of 1 metre is clear on each side of the vehicle.
- Place 2 parallel lines on the floor surface, approx. 500-600mm away from vehicle wheels. (The one in our example is 600mm.)
- These parallel lines should run approximately the full length of the vehicle.
- The parallel lines must be thick enough to be visible on the vehicle's 360° camera screen – approx. 50mm thick. The use of masking tape is suggested.

NB: Refer to the vehicle owner's manual for instructions as to how to access the vehicle 360° camera screen.

15.2 View camera alignment

- Turn on the vehicle's 360° camera screen - refer to the vehicle owner's manual.
- With the bottom access panel & 360° camera assembly securely in position on the towing mirrors, close all vehicle doors fully.
- Whilst seated in the vehicle, view the 360° camera screen to check the alignment of the parallel lines on the floor surface.
- You want to see these lines being parallel to the longitudinal centreline of the vehicle, as shown below.
- If the lines are not parallel, you may want to adjust the angle of the 360° camera on the lower access panel until these lines are parallel.
- Refer to '360° Camera Calibration' as demonstrated in Step 16 for adjustment/alignment instructions.

NB: The alignment does not need to be perfect; this is only a guide, adjust to your preference/desired position.



50mm line marked on floor surface approx. 600mm from vehicle wheels. Ensure to be parallel to centerline of vehicle.

Step 16

360° Camera Calibration (via the factory infotainment system)

To access camera calibration setting:

- Turn the Ignition 'ON'.
- Make sure the audio system is OFF
 - (Press **Power-Volume** dial)
- Push '**MENU**' button
- Press the '**Display**' button on the multi-display.
- Press '**Screen off**' on the multi-display.
- Press '**CH >**' button x5 times.
- Press '**< TRACK**' button x5 times

NB: For some vehicles, that have a different multi-function display, it may be:

- Press '**TRACK UP**' x5 times;
- Press '**TRACK DOWN**' x5 times

(Replace the last two bullet points above)

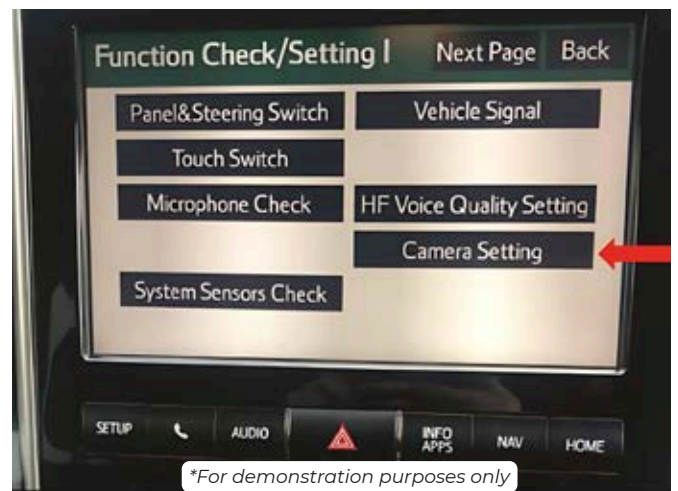
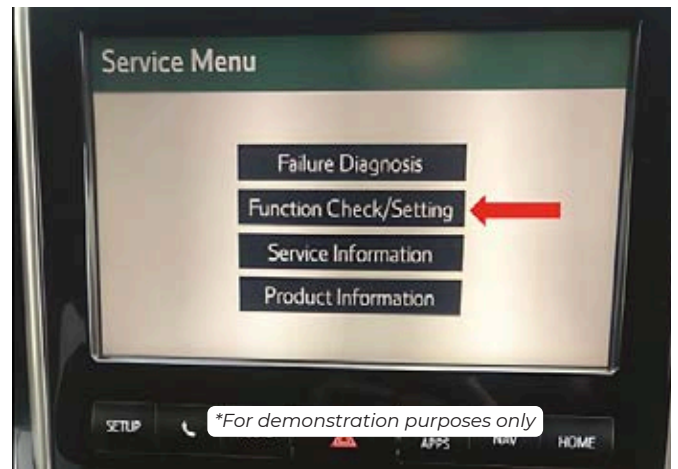
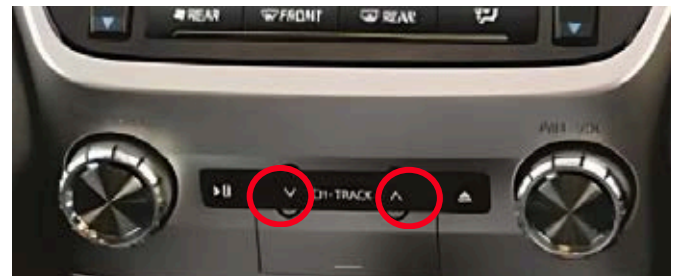
The vehicle should enter diagnostic mode and display the '**Service Menu**'.

Press '**Function Check/Setting**' on the multi-display.

Press '**Camera Setting**' on the multi-display. "Camera Setting will only be available when ignition is ON.

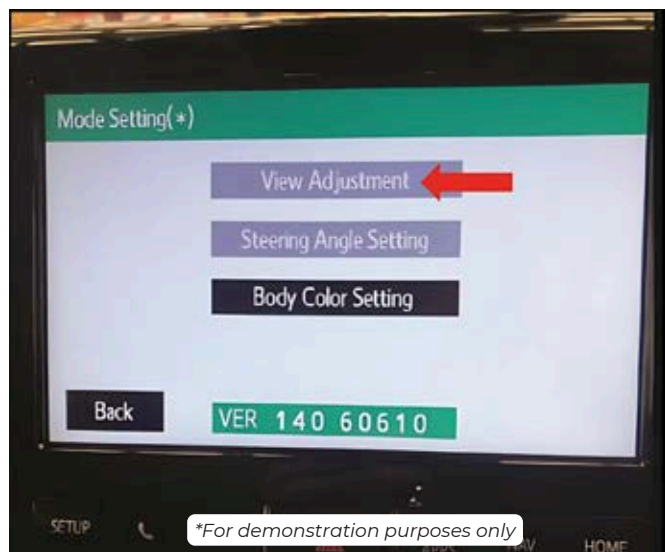
- If vehicle is in Accessory mode, '**Camera Setting**' will be greyed out and inaccessible.

Press '**Next**'



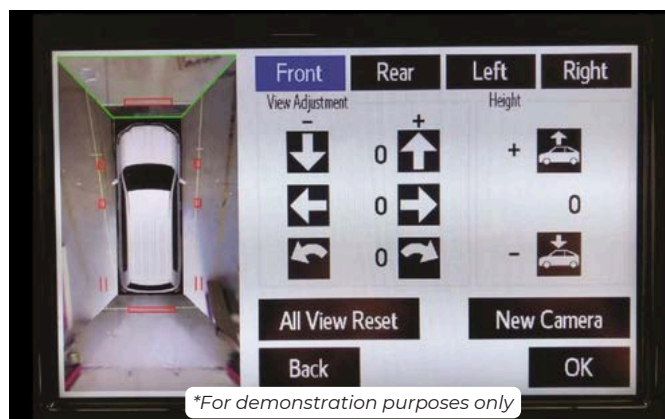
Press and hold **'View Adjustment'**

Press **'Next'**

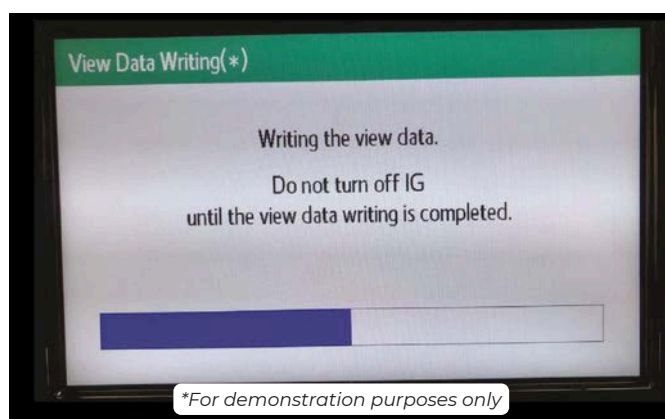


Adjust **'Left'**, **'Right'** (and **'Front'** or **'Rear'**, if necessary) camera using the on-screen control.

Align the cameras to suit your desired position/s etc.



Press **'OK'** to finalise setting.



Turn the vehicle OFF - to exit calibration mode once data writing is completed.

Turn the vehicle ON - to check cameras are correctly calibrated, with all corners aligned.

REPEAT Step 16 only if you need to re-align cameras further.

- Proceed to the next steps once satisfied with camera positioning on multi-display.

Step 17

Test Mirrors

Begin testing to ensure your Clearview Mirrors are operating correctly.

- Test your mirror functionality to ensure they run correctly - UP, DOWN, LEFT, RIGHT etc.
- Indicate LEFT, Indicate RIGHT, Test HAZARD Lights etc.
- Test other functions ie. Powerfold, Heated Glass, BSM etc, only if applicable.



NB: If your mirror/s are not functioning correctly, refer to 'Troubleshooting' on [Pages 20-21](#), OR follow the instructions again in case a step has been missed.

'Auto Mirror Tilt' feature when transmission is in 'REVERSE' gear (for [Sahara variants only](#)), not compatible on [Clearview Towing Mirrors](#). To clear the memory on the Driver-side door:

Press '**SET**'; then hold '**1**' (*beep*). Then press '**SET**'; then hold '**2**' (*beep*). Press '**SET**'; then hold '**3**' (*beep*).

Step 18

Reassemble the door trim

Re-align and secure the door trims into their original position, ensuring no wires or cables are trapped in the process.

- Follow and **REPEAT STEP 6** in [REVERSE ORDER](#) to help get the trims back into place.



Once the large door trim has been mounted in place, follow and **REPEAT STEPS 1-5** in [REVERSE ORDER](#) to assist you with putting all the screws, panel trim, courtesy light (or blank panel) and wiring back into their fixed position.



NB: Ensure you feed the courtesy light wiring through the hole located in the bottom rear corner in the large door trim before re-connecting the wiring to the connector on the courtesy light/blank panel.

Congratulations! You have now fully installed your new Clearview Towing Mirrors and are ready for your next adventure!

Maintaining Powder Coated Surfaces

Whilst powder coating is a lot more durable, and longer lasting than paint, it can still be affected by dust, dirt, salt water and constant exposure to the weather. For this reason, no protective powder coating is completely maintenance-free. With the right maintenance, you can increase the life of the finish of your powder-coated surfaces:

- Harsh chemicals and solvents can damage the powder coating. Once damaged, the surface is a lot more vulnerable to fading and failure.
- We recommend regularly inspecting your powder coat and wiping any dust off with a soft cloth. Clean, good-quality microfibre cloths are recommended.
- We recommend regular washing with highly diluted mild soap and water. Use a soft towel to gently clean. Rinse and dry with another soft drying towel/chamois.
- If your powder coat is losing its shine, you can apply a thin layer of high-grade non-abrasive car wax after it's been cleaned. Wipe all the wax off once it's dried and the powder coat should look like new again! Use a car wax brand that contains a UV blocker or UV inhibitors. Do not use compound-type waxes as they contain abrasives that can harm the powder coating.
- It's important in coastal areas to regularly clean any powder-coated surfaces as salt will stick to the coating, dulling its appearance. This can leave your powder-coated surface looking chalky.
- We don't recommend paint touch-ups to cover imperfections as paint won't adhere to powder-coated surfaces. A local professional can quote to repair the powder coating.

How do I maintain my Powerfold mirrors?

Under regular Powerfold operation, there shouldn't be any maintenance required, however, if it is regularly used off-road, then the mirrors may need to be maintained every 6-12 months.

- This maintenance involves pulling the mirror into the fully extended position and applying dry lubricant on the arms, not the arm covers.

Maintaining your Chrome Mirrors

The chrome finish used on our mirror heads is a chrome-plated plastic, which provides the appearance and feel of real chrome, in a more lightweight and cost-effective material. Weather conditions, how often they are washed and how close to the ocean you live, all play a role in the longevity of the chrome finish.

- Automatic car washes that use bristle brushes or acidic preparations can damage your chrome
- Salt and de-icers will surface pit chrome and extra care will be required with more frequent washes to remove residue.
- We recommend washing them weekly with mild soap and water, steering clear of ammonia-based or acid solutions.
- Clean, good-quality microfibre cloths are recommended to wipe down the chrome surface and prevent water stains from forming
- An occasional polish with a non-abrasive chrome polish will help bring your chrome back to its original shine!

NB: If chrome isn't properly maintained, it can develop pitting from corrosion or lose its attractive shine. We recommend **Autosol Metal Polish** and **Autosol Metal Life Saver**.

Can I install Clearview mirrors myself?

Yes! Depending on the complexity of the installation, Clearview mirrors are extremely easy to install and mount to the vehicle's original OEM mirror mounts. Depending on the vehicle's current mirror options, Clearview mirrors include plug and play wiring looms. Instructional videos are also available on our website (clearviewaccessories.com.au) in the "HOW TO" section. Clearview recommends that any installation requiring hard wiring be done by a licensed auto electrician.

What is the fitting time?

Depending on the complexity of the installation, a dealer should be able to install the mirrors in approximately 15 minutes per side of the vehicle. Installation requiring special fitting and/or hard wiring will require longer fitting times (eg: Camera and electric wiring kits). Note: The 70 Series mirrors with electrics are more complex and will take more time than a 'normal' vehicle fitting. Please contact Clearview mirrors if you have any questions about fitting or wiring.

Are the telescopic arms electric?

No. The telescopic arms are extended manually. Clearview Mirrors will only fold against the vehicle electronically provided we make that model in Power Fold.

Can I retrofit the original mirror base to the Next Gen or Compact mirrors?

No. The cost of converting the mirrors to suit the new models is not worth it. We recommend either selling your Original mirrors privately or through the "Pre-Loved" section (Within the "Shop" menu category) of our website and purchasing the new Next Gen or Compact mirrors brand new.

Can I add an indicator later if I didn't order the mirrors with an indicator?

Yes, you can. But it comes at a greater expense than if you were to order the mirrors with indicators. Installation to the mirror head will require longer time and more parts to dismantle.

Are spare parts available?

Yes. We have a list of spare parts for all our mirrors on our website. Our dealers also have a list of all our spare parts.. If you cannot find the parts that you require, please contact us or any of our dealers to assist you with your inquiry



How do I maintain my mirrors?

We recommend that Clearview Mirrors are lubricated every 6-12 months, when the arms feel stiff during use, or after any big trip to ensure longevity of your Clearview Towing Mirrors!


This maintenance includes pulling the mirror into the fully extended position and applying the dry lubricant on the arms. We recommend using WD-40 Dry PTFE Lubricate.




Avoid any waxy lubricants as they can attract dirt and grit.

SCAN THE QR CODE AND VIEW OUR VIDEO DEMONSTRATING

How to lubricate the arms on Clearview Towing Mirrors



SCAN ME



I have just installed my new Powerfold mirrors and the mirror heads appear 'loose'/'floppy'.

After the mirrors are installed, they need to be cycled a few times. This will allow all the internal mechanisms to set and find the proper positions.

- If the mirror head is still loose/floppy after they're cycled, please contact Clearview Technical Support.

I have installed my Powerfold Mirrors and have noticed that the Passenger's side mirror is closer to the vehicle compared to the Driver's side; Is this normal?

This is entirely normal. In most vehicles, the mirror housings are angled differently between the driver's and passenger's sides.

- This is because when you sit in the car, the mirrors are positioned from/to the driver's position (which is off-centre), so generally, the passenger side mirrors are closer to the vehicle body to allow you to have the same field of vision in the mirror.

One of my Powerfold Mirrors folds/opens quicker than the other one; Is this normal?

Generally, the passenger mirror will fold/open quicker, as it is closer to the vehicle body and therefore travels a shorter distance compared to the driver's side mirror. See previous question in regards to why the mirrors are angled differently.

My mirrors have been knocked out of Driving Position; how do I fix it?

Press the powerfold switch once. This should initiate the powerfolding motors and the mirrors should start folding inwards. Wait until the mirrors are fully folded in and have stopped moving, then press the powerfold switch again. This should now bring your mirrors back out to normal driving position. Check and see if the mirrors are locked into position firmly. If the mirror is not returning to its normal position, please contact Clearview Technical Support.

***Note:** The Powerfold mirrors can fold manually, however the manual fold mechanism is only designed as a safety feature. Through the lifespan of the product, manual-folding will occur, such as people walking into them or accidentally bumping them. The internal mechanisms are designed to withstand this accidental manual folding during normal usage. It is not recommended for the mirrors to be manually folded constantly, as it will prematurely wear out the internal folding mechanisms and reduce the lifespan of the product.*

My mirror was knocked out of driving position. When I cycled them, there is a clicking sound and the mirror appears to have “jumped”; Are my mirrors damaged?

When the Powerfold mirror is being cycled to find its original driving position, it will 'jump' back into position and make an audible click sound when mechanisms realign. Once the mirrors have found the original position and have been cycled, check for looseness and mirror movement. If they feel firm, then the mirrors have not been damaged. If they still feel loose, please contact Clearview Technical Support.

Why don't my mirrors fold all the way in/out when I press the switch?

The circuit breaker inside the mirror activates when the electrical current increases due to resistance. If the mirror stops before it reaches the folded in/out position, that means something is adding resistance while the mirrors are folding, hence activating the circuit breaker before it has reached the desired position. Please contact Clearview Technical Support.

Clearview Towing Mirrors are full replacement towing mirrors designed and manufactured to the highest quality standards to replace your vehicle's standard side mirrors. We stand behind our Next Gen and Compact Towing Mirrors with a 3-year Manufacturer's Warranty and a 7-year Parts Warranty. We stand behind our Original Towing Mirrors with a 12-month Manufacturer's Warranty and a 3-year Parts Warranty. Clearview Accessories warranty applies to the original purchaser only.

Please ensure that your receipt is kept in a safe place. A receipt will be required to make a warranty claim on any Clearview product. If we determine that a Clearview Towing Mirror is defective in materials or workmanship during the Warranty, we will either repair or replace the product. Repair or replacement is solely at the discretion of Clearview Accessories.

Please ensure that you fit the Clearview products in accordance with the product information provided and all relevant vehicle safety and compliance laws; and use the Clearview product for the purpose for which it was originally designed. This warranty does not apply to failure or damage caused by incorrect or faulty fitment, accidental or intentional damage, alteration, acts of nature, vandalism, collision, road hazards or adverse conditions, misuse, abuse or neglect of the Clearview product, including improper repair or maintenance or failing to repair and maintain the product, failure of other products, operation of the product outside of its environmental or technical specifications, or repair or modification carried out by anyone other than Clearview Accessories. No charges will be accepted for external labour or materials without the prior advice or clearance from Clearview claims team. Clearview Accessories warranty does not cover any scratches or chips.

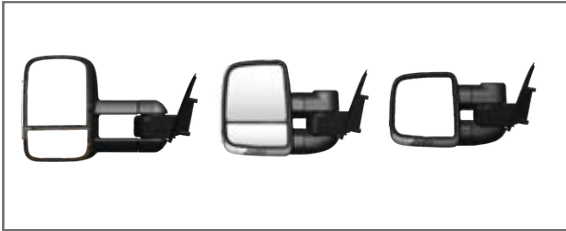
Clearview Towing Mirrors are designed to be vehicle-specific. When purchasing Clearview Towing Mirrors, carefully select your product according to ADR compliance laws and vehicle specifications. Clearview Towing Mirrors are not designed to be modified for convenient use on alternative vehicles. Alteration, modification, or manipulation of our products will void all warranty with Clearview Accessories.

All claims under this warranty should be lodged through our website warranty section <https://www.clearviewaccessories.com.au/about/warranty/> with the detail of the fault, proof of purchase, proof of identification and vehicle fitment details where relevant. If your claim is accepted for defects in material or workmanship Clearview will, at its discretion, offer to repair, replace parts, or return and refund.

Our goods come with guarantees that cannot be excluded under the Australian Consumer Law. You are entitled to a replacement or refund for a major failure and for compensation for any other reasonably foreseeable loss or damage. You are also entitled to have the goods repaired or replaced if the goods fail to be of acceptable quality and the failure does not amount to a major failure. In the event of a minor failure, the company reserves the right to choose to repair or replace the product.

**Clearview Towing Mirrors | ABN: 59 140 145 393 | 3 Frog Court, Craigieburn VIC 3064
Ph: (03) 8351 9933 | Email: info@clearviewaccessories.com.au**

Towing Mirrors



Power Boards



Rock Tamers



Tyre Spider



Easy Slides



Power Slides



Expanda Slides



Fridge Cage



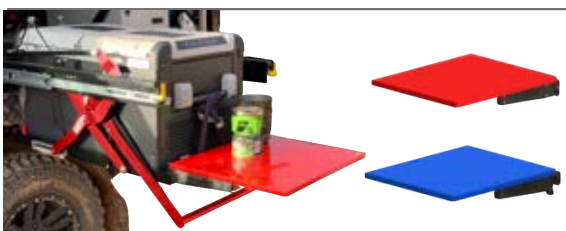
Pantry



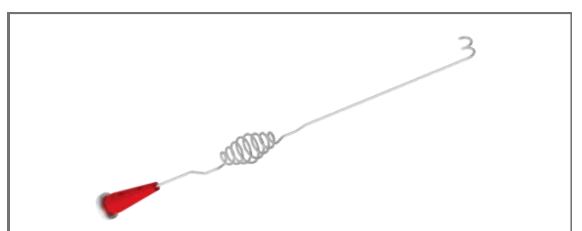
Cutlery Set



Clip on Trays



Cable Saver





CLEARVIEW[®]
ACCESSORIES

3 Frog Court
Craigieburn VIC 3064
AUSTRALIA
(03) 8351 9933

info@clearviewaccessories.com.au

clearviewaccessories.com.au